

# NORD Conveyor 1000 V4 - OTTO 1500

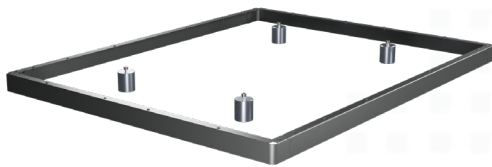
The NORD Conveyor 1000 enables the AMR to pick up and deliver pallets – transporting them to e.g. production lines or packing stations, thereby enhancing internal logistics.

The NORD Conveyor's integrated technology enables communication to external roller conveyors by wireless signals. A Dock Target can be installed in front of an existing conveyor line allowing the PM1000 to successfully dock and receive or deliver a pallet.

This fully automated premium solution allows heavy payload transportation of up to 1650 kg to optimize logistics and production.



## NORD compatibility



NORD Spacer Kit

## OTTO compatibility



OTTO 1500

|                      |  |
|----------------------|--|
| Designated use       | For autonomous receive and unload of pallets from conveyor |
| Product name         | Nord Conveyor 1000 V4 - OTTO 1500                          |
| Robot compatibility  | OTTO 1500  |
| NORD compatibility   | NORD Spacer Kit  |
| Weight               | 250 kg   551 lbs   |
| Max payload capacity | 1 650 kg   3 638 lbs (without NORD Spacer Kit)             |



Small footprint  
around the AMR



High level of  
feedback



Transport of EU- and  
US-size pallets



High industrial  
level of quality



Max payload of up to  
1650 kg

# Specifications



| Performance             |  |
|-------------------------|--|
| Pallet speed            | 200 mm/sec   7.9 in/sec                      |
| “Roll through solution“ | Loading and delivery from front and rear end |
| Function                | Manual override buttons                      |
| Motion type             | Servo technology                             |
| Data collection         | Error codes + data transfer to AMR           |

| Additional Features |   |
|---------------------|---|
| 1. Stack lights     | Front & rear - operating-level & service status |
| 2. Communication    | Optical sensor to confirm position at conveyor  |

| Dimensions                          |   |
|-------------------------------------|---|
| Length                              | 1 745 mm   68.68 in                                 |
| Width                               | 1 205 mm   47.42 in                                 |
| Height                              | 165 mm   6.5 in                                     |
| Height from floor to top of rollers | 477 mm   18.78 in (possible extension up to 800 mm) |
| Roller diameter                     | 70 mm   2.75 in                                     |
| Center distance between rollers     | 95.8 mm   3.77 in                                   |
| Transport area                      | 1 623 x 1 138 mm   63.9 x 44.8 in                   |