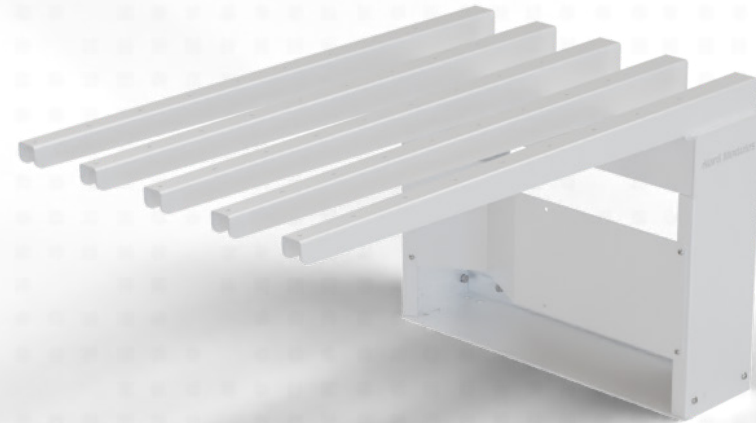


Basic Gate

The Basic Gate merges with the Nord Modules Quick Mover installed on a MiR robot.

The Basic Gate can receive or hold an object, connecting the mobile robot with production lines and storage systems. It is designed as a basic standard module that can serve as e.g. a flexible pick-up point or simply be adjusted to specialized work processes.

Due to the optimized distance between the arms, the modules deliver great flexibility in terms of load sizes – from small to large items.



WORKS WITH

Quick Mover



Simple and fast
assembly



Small
footprint



Reliable and
cost-effective



Can be customized to
specific needs



Can hold and receive
up to 220 kg

Specifications

General information

Designated use

Robot compatibility

Variations

Color

Disclaimer

Merges with the QM to receive and hold, or hand off payloads

MiR100, MiR200, MiR250

3 Arms | 5 arms | long arms | short arms

RAL 7035

Specifications may vary based on local conditions and application setup

Dimensions

Length (5 arms/long arms)

985 mm | 39.8 in

Width (5 arms/long arms)

635 mm | 25 in

Height (5 arms/long arms)

532 mm | 21 in

Length (3 arms/short arms)

625 mm | 24.6 in

Width (3 arms/short arms)

360 mm | 14.2 in

Height (3 arms/short arms)

532 mm | 21 in

Center distance between arms

140 mm | 5.5 in

Hand off & pick up area (5 arms/long arms)

815 x 600 mm | 32 x 23.6 in

Hand off & pick up area (3 arms/short arms)

455 x 350 mm | 18 x 13.8 in

Payload

Max payload capacity

Up to 220 kg | 485 lbs (see AMR max)

